



A Subsidiary of PowerSecure International, Inc.

tm

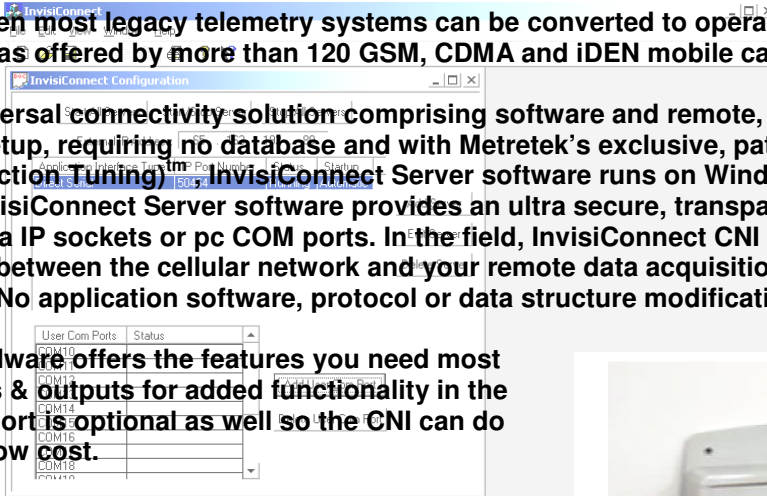
InvisiConnect

Transparently & Securely Connects Telemetry Systems via Cellular IP Service

With InvisiConnect, even most legacy telemetry systems can be converted to operate on today's cellular IP (packet data) services as offered by more than 120 GSM, CDMA and iDEN mobile carriers around the world.

InvisiConnect is a universal connectivity solution comprising software and remote, intelligent, cellular hardware. Simple to setup, requiring no database and with Metretek's exclusive, patent pending PCT (Programmable Connection Tuning)™, InvisiConnect Server software runs on Windows™ NT, 2000 & XP operating systems. InvisiConnect Server software provides an ultra secure, transparent connection to your application software via IP sockets or pc COM ports. In the field, InvisiConnect CNI series hardware provides the interface between the cellular network and your remote data acquisition terminal device, via an RS232 connection. No application software, protocol or data structure modifications are necessary.

InvisiConnect CNI hardware offers the features you need most including digital inputs & outputs for added functionality in the field. A second serial port is optional as well so the CNI can do double duty at a very low cost.



InvisiConnect Features and Benefits include:

- Multi-band GSM/GPRS, CDMA/1XRTT and iDEN digital cellular transceiver
- RS232 connection to remote data terminal equipment (RS485 optional)
- 'AT' command support & hardware/software flow control options for both ends
- Reports event status of up to 5 user accessed digital inputs
- Provides up to 2 digital output for control
- DES based encryption for secure access
- For maximum security, remote hardware acts as client and not as server
- Over-the-air programming of CNI series cellular hardware
- PCT™ provides transparency by compensating for IP network characteristics
- Provides portability & overall lower installation costs
- Provides electrical isolation from network
- CNI series hardware available fully packaged or as OEM pca module
- Converts many systems: traffic control, SCADA, security, etc



Specifications: (Subject to change without notice)

Power Options:

All models require 9-28Vdc @1amp which can be sourced by various configurations of AC, Battery or Solar mains. Please consult factory.

Physical:

Packaged Models: Enclosure: polycarbonate, designed to meet IP65
Ext. dimensions: Approximately 6.5(16.5) x 9.5(24) x 1.7(4.3) in.(cm).
Weight: Approximately 3lbs. (1.3Kg)

OEM Model: Dimensions: Approx. 5(13) x 5(13) x 2(5) in.(cm).

Connections: Screw type terminal strips for Input & Outputs. Dual cable glands w/strain relief.

Environmental:

Operating Temp Range: -25 to +70 C

Operating Humidity to 90% non-condensing

Certifications:

PTCRB approved, Fully GSM Phase 2+ Compliant.

FCC part 15 (class B) and parts 22, 24

AT&T, Verizon, USCellular, Alltel + associated resellers and roaming partners

Represented by:

Sage Designs, Inc.

150 Shoreline Highway, Suite 8A

Mill Valley, CA 94941-3634

Phone: 415-331-8826 · 1-888-Ask-Sage

Fax: 415-331-8969 · 1-888-Fax-Sage

www.SageDesignsInc.com

Metretek, Incorporated
305A East Drive Melbourne, Florida 32904
Ph: 321-259-9700 Fax: 321-259-2900
www.metretekfl.com

Copyright 2003-2007 Metretek, Inc